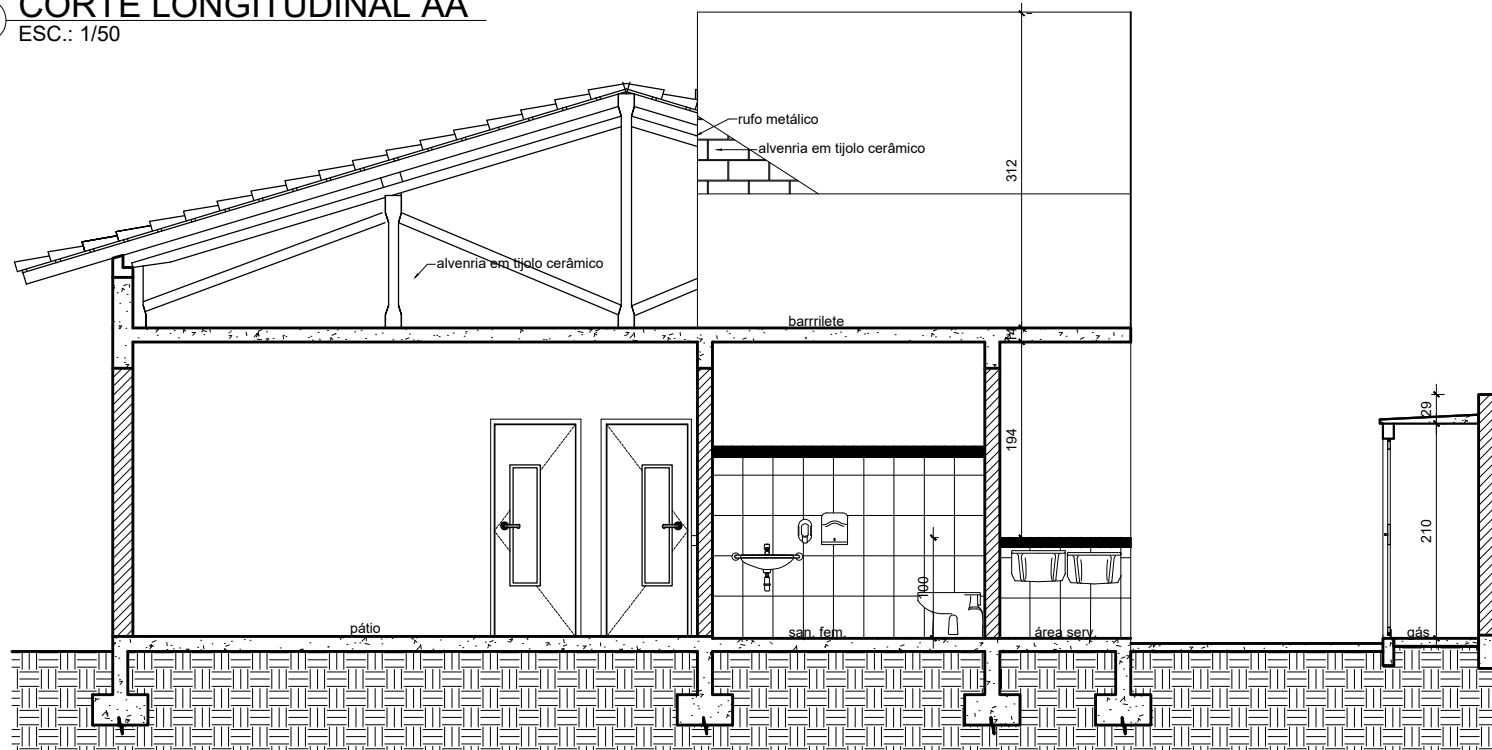
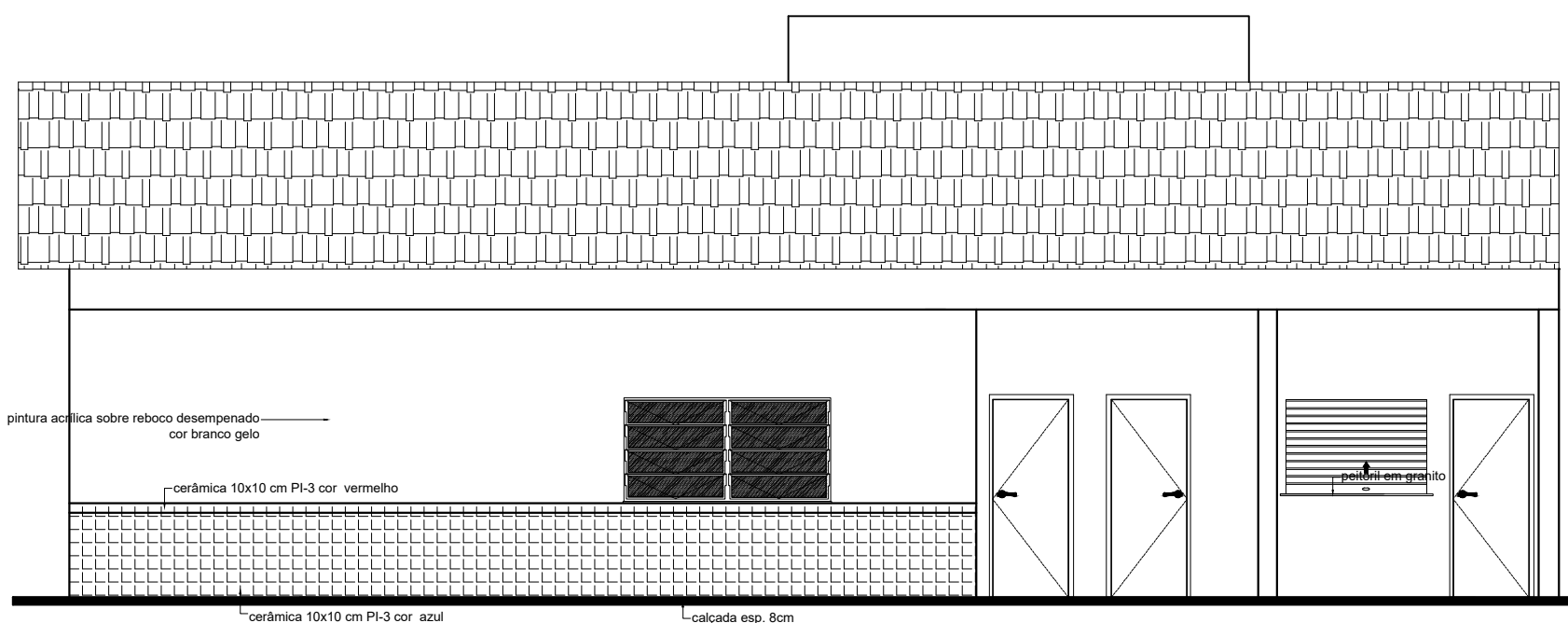
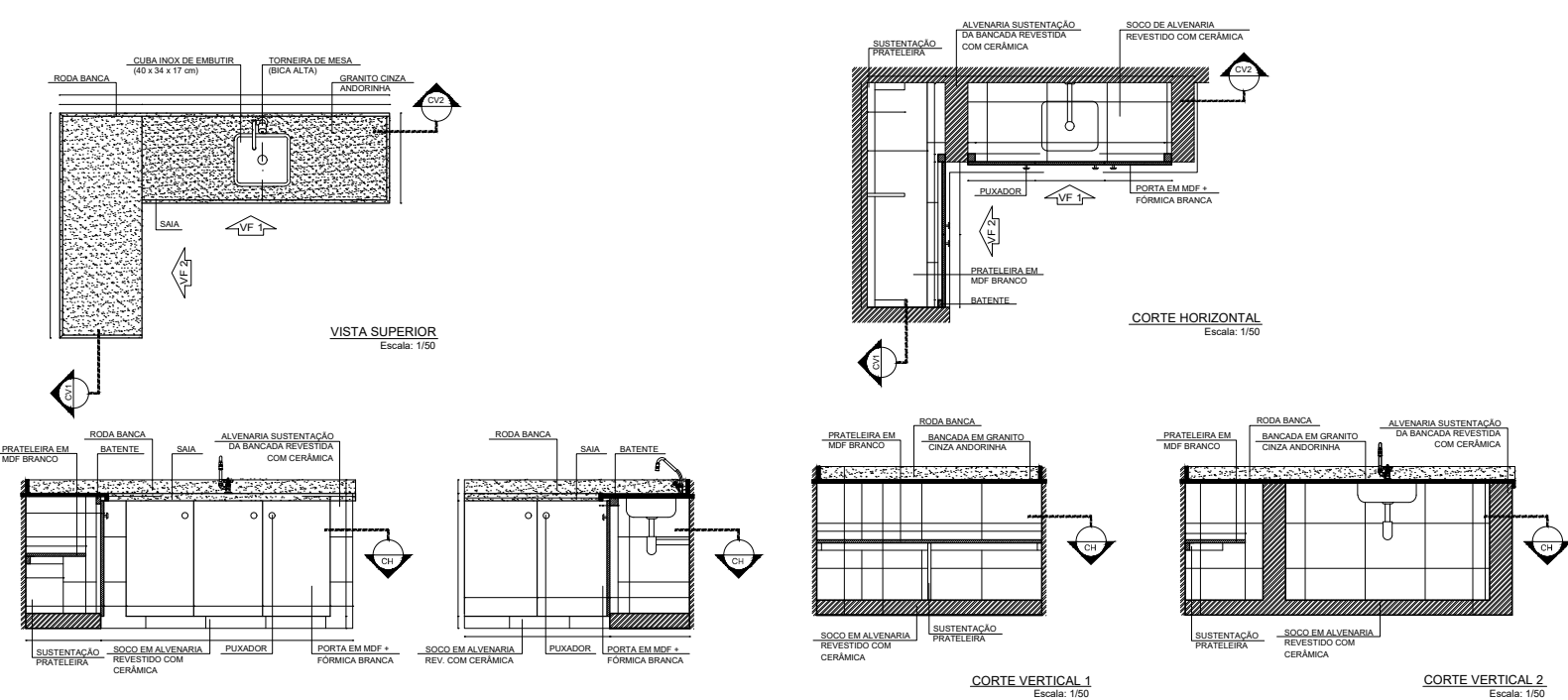
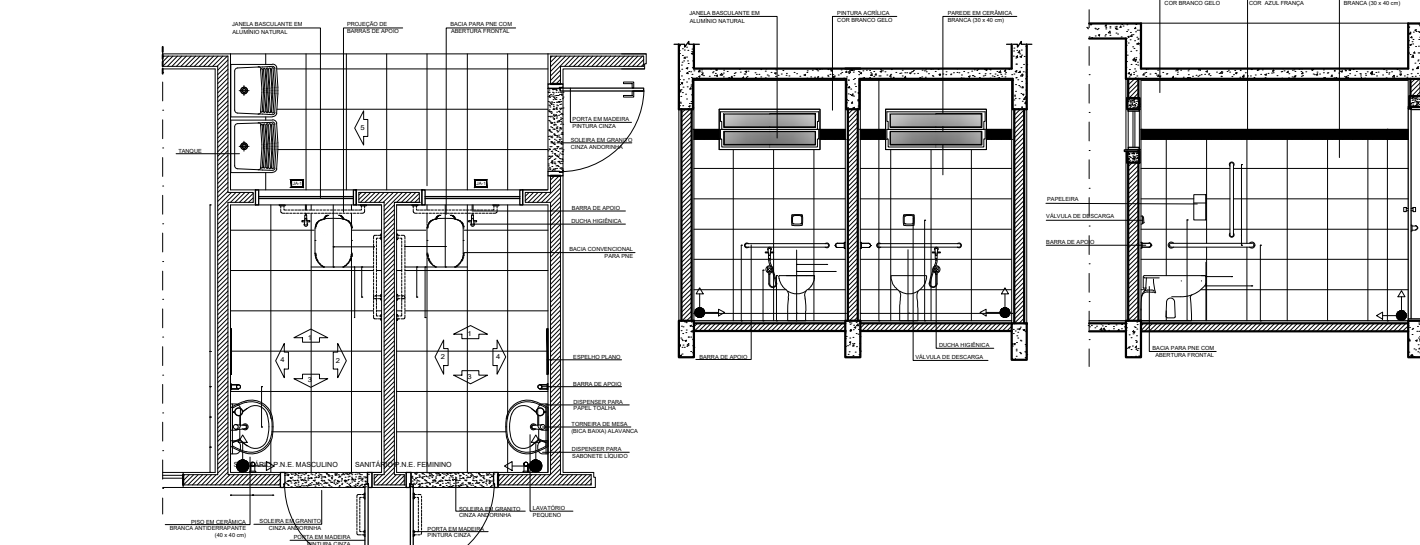


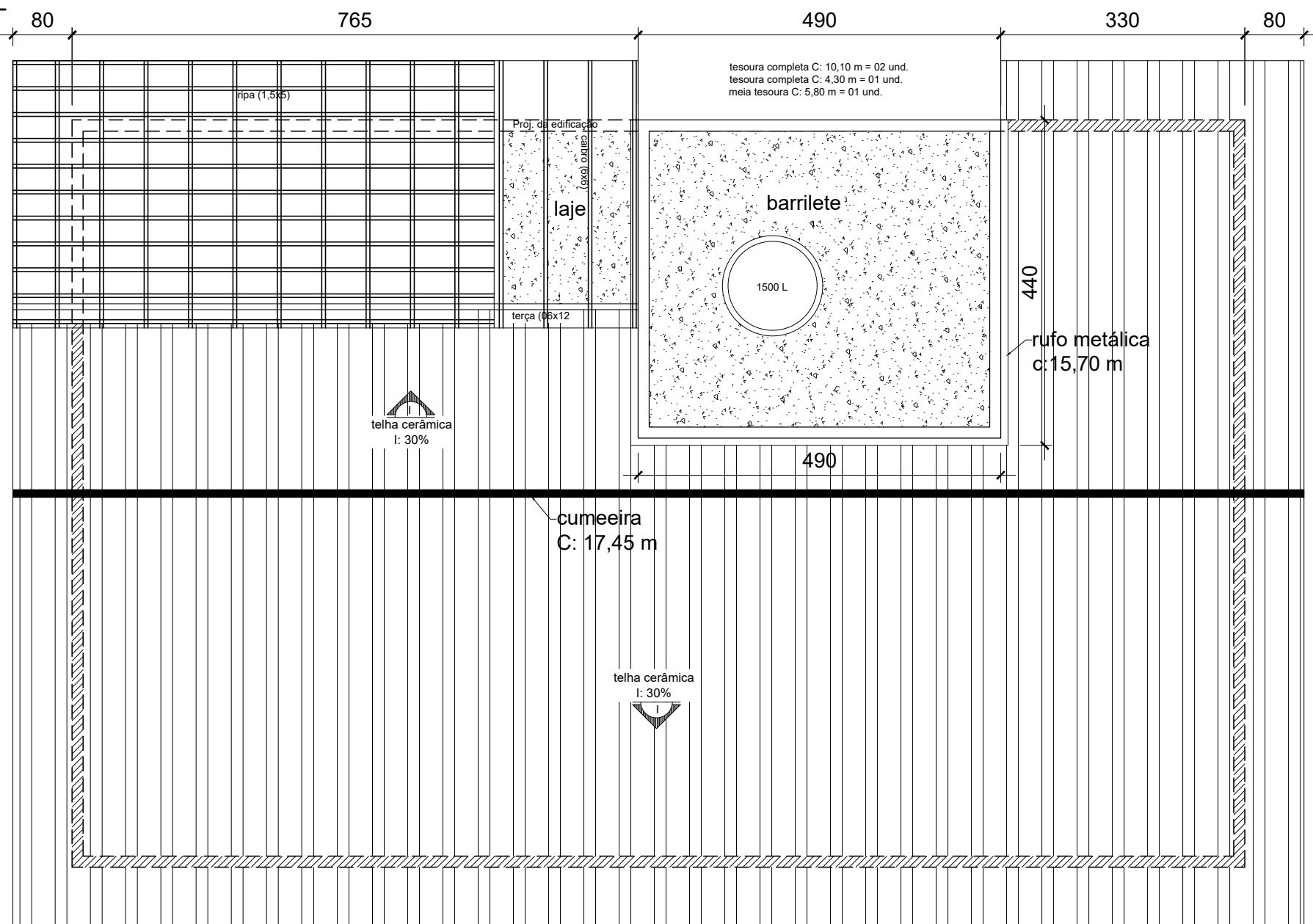
1 CORTE LONGITUDINAL AA
ESC.: 1/50



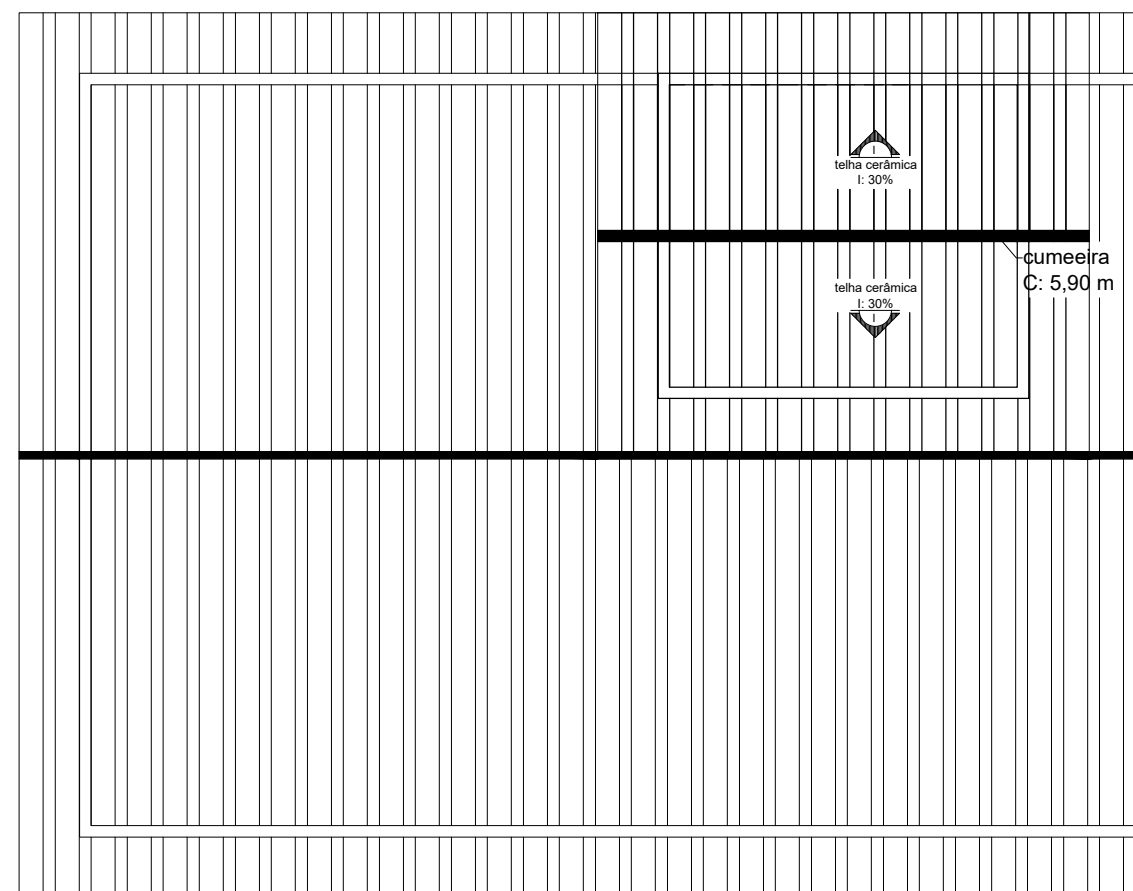
2 CORTE TRANSVERSAL BB
ESC.: 1/50



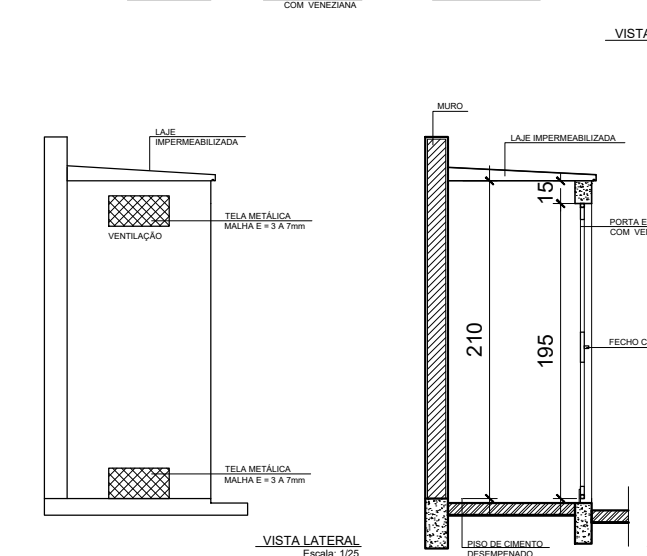
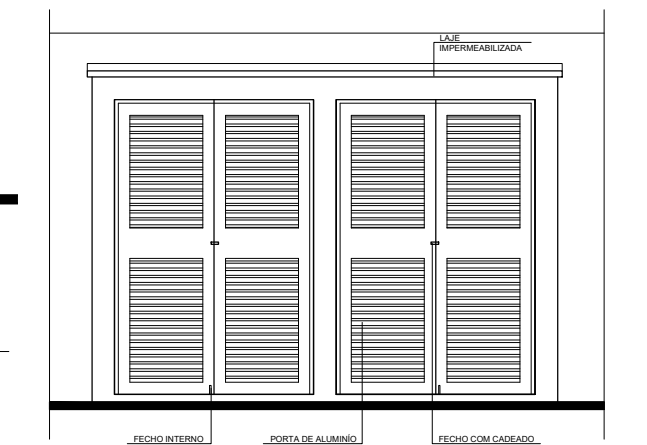
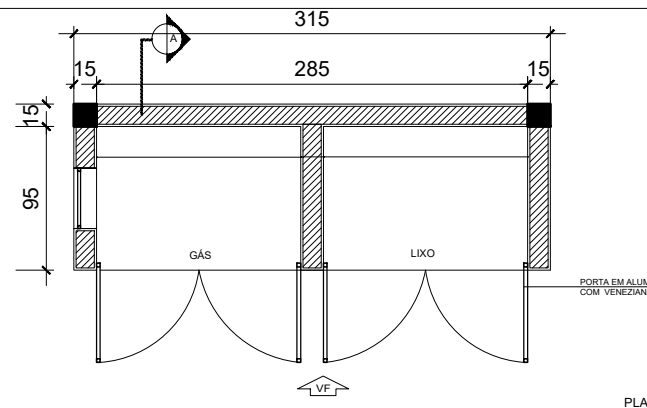
3 VISTA FRONTAL
ESC.: 1/75



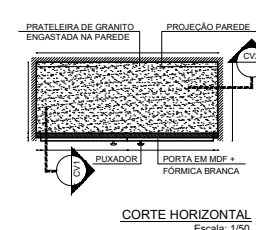
4 DIAGRAMA DE COBERTURA
ESC.: 1/100



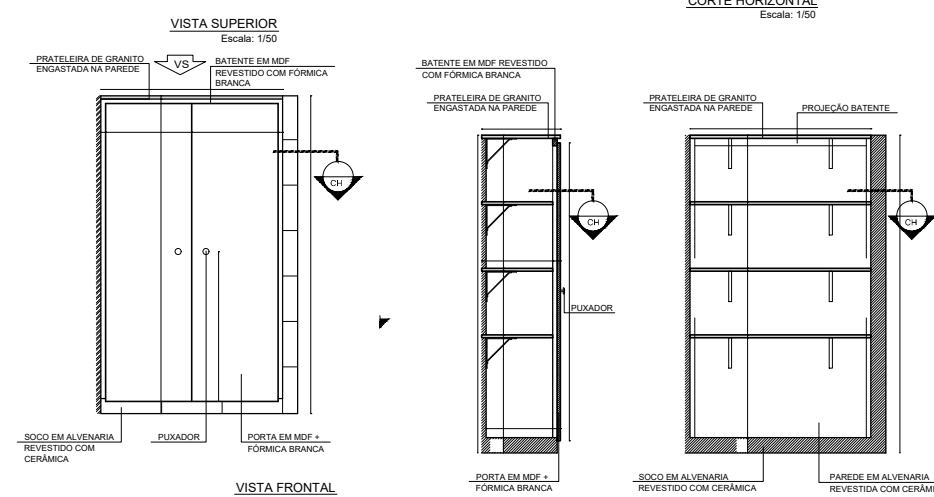
5 DIAGRAMA DE COBERTURA - caixa d'água
ESC.: 1/100



2 ABRIGO DE GÁS
S/ESC.



CORTE HORIZONTAL
Escala: 1/50



VISTA SUPERIOR
Escala: 1/50

PROJETO ARQUITETÔNICO ESCOLA MUNICIPAL DE ROCINHA

RESPONSÁVEL TÉCNICO	CREA
SAMUEL ELIAS CORDEIRO	200235/D
PROPRIETÁRIO	CNPJ/CPF:
PREFEITURA MUNICIPAL DE OLHOS D'ÁGUA	01.612.547/ 0001 - 00
DETALHE	USO
CORTE TRANSVERSAL, CORTE LONGITUDINAL, VISTA FRONTAL, DIAGRAMA D COBERTURA, DETALHES BANHEIRO E COZINHA	DOMÍNIO PÚBLICO
DATA	Nº CONVÊNIO
OUTUBRO 2021	ÁREA TERRENO
LOCAL	ÁREA CONSTRUÍDA
COMUNIDADE DE ROCINHA, ZONA RURAL, MUNICÍPIO DE OLHOS D'ÁGUA/MG	160,00 m²
PROJ	ESCALA
ARQ	INDICADA
	FOLHA
	1/1
	REVISÃO
	01

